

DRUG & ALCOHOL OFFICE

DRUG OFFENCES & SEIZURES, WA, 1998-2004

INTRODUCTION

This publication presents trends in quarterly and annual drug offences and drug seizures based on charges by the West Australian Police Service (WAPS) and updates data in *Statistical Bulletin No. 9* (July 2000), *Statistical Bulletin No. 10* (February 2001) and *Statistical Bulletin No. 12* (May 2001). Detailed information about definitions and data limitations is contained in the methods section at page 18.

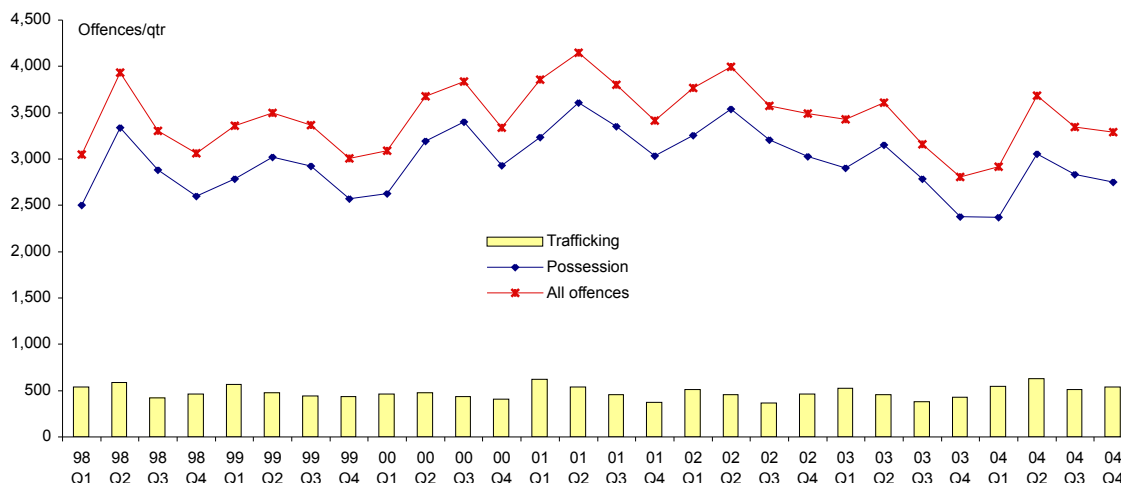
The data in this publication is from the Offence Information System (OIS) and counts the number of offences under the *Misuse of Drugs Act 1981* where a person has been processed by the police. 'Processed persons' refers to adults or juveniles who have been arrested, summonsed, cautioned or appeared before a Juvenile Justice Team. Variations occur when comparing tables as breakdowns by age group are based on the count of processed persons, whereas breakdowns of offences into 'possession' and 'trafficking' are based on a count of offences.

DRUG OFFENCES

Since the March quarter 1998 up to the present there were about 3,500 to 4,000 drug offences per quarter in WA, of which about 85% were *possession* offences (ie minor offences such as possession/use and possession of implements) with the remaining 15% being *trafficking* offences (ie serious offences such as sell/supply, cultivation and manufacture) (Table 1, page 2).

Offences increased from the March quarter 1998 (3,047 offences) to the June quarter 2001 (4,145 offences) and then decreased slightly, with a total of 3,289 offences in the December quarter 2004 (Figure 1).

Figure 1
Quarterly drug offences by type of offence, WA, 1998-2004



In Brief

Over the seven year period 1998 - 2004:

- about 85% of all drug offences have involved possession (ie minor) offences; and
- there were about 3,500 to 4,000 drug offences per quarter.

In the December quarter 2004 a total of 3,431 processed persons were charged with drug offences in WA:

- of whom 60% were in the Metropolitan Region, 21% were in the Southern Region and 19% were in the North East Region; and
- 2% were aged less than 15 years, 47% were aged 15 to 24 years, 45% were aged 25 to 44 years and 6% were aged 45 years and older.

Table of Contents

Introduction.....	1
Drug offences	
State overview	1
Police regions & districts.....	2
Age groups	2
Regions.....	3
Drug seizures	
Annual & quarterly trends	3
Methods.....	18

Table 1
Quarterly drug offences by type of offence
1998-2004

Year & qtr	Possession	Trafficking	Total
1998			
Qtr 1	2,505	542	3,047
Qtr 2	3,340	591	3,931
Qtr 3	2,881	422	3,303
Qtr 4	2,598	462	3,060
Total	11,324	2,017	13,341
1999			
Qtr 1	2,786	570	3,356
Qtr 2	3,021	479	3,500
Qtr 3	2,962	441	3,367
Qtr 4	2,570	438	3,008
Total	11,339	1,928	13,231
2000			
Qtr 1	2,629	460	3,089
Qtr 2	3,197	480	3,677
Qtr 3	3,398	435	3,833
Qtr 4	2,931	407	3,338
Total	12,155	1,782	13,937
2001			
Qtr 1	3,233	623	3,856
Qtr 2	3,607	538	4,145
Qtr 3	3,351	453	3,804
Qtr 4	3,038	375	3,413
Total	13,229	1,989	15,218
2002			
Qtr 1	3,257	513	3,770
Qtr 2	3,538	454	3,992
Qtr 3	3,210	364	3,574
Qtr 4	3,028	462	3,490
Total	13,033	1,793	14,826
2003			
Qtr 1	2,903	523	3,426
Qtr 2	3,153	453	3,606
Qtr 3	2,783	379	3,162
Qtr 4	2,381	427	2,808
Total	11,220	1,782	13,002
2004			
Qtr 1	2,371	543	2,914
Qtr 2	3,055	626	3,681
Qtr 3	2,834	514	3,348
Qtr 4	2,749	540	3,289
Total	11,009	2,223	13,232

Note: Count is based on offences not processed persons.

The number of quarterly *possession* offences grew from 2,505 in the March quarter 1998 to 3,607 in the June quarter 2001 and then have declined to 2,749 in the December quarter 2004, a fall of 24.0% (Table 1).

Police Regions & Districts

Note: A breakdown of offences at a regional level is available from the September quarter 2000, when revised the present system of regional boundaries was introduced.

The majority of drug offences occurred in the Metropolitan Region, accounting for nearly two thirds of all drug offences in the State (Tables 2 - 4, pages 4 and 5).

In the December quarter 2004, there was a count of 3,431 processed persons charged with drug offences in WA, of whom 2,051 (59.8%) were in the Metropolitan Region, 735 (21.4%) were in the Southern Region and 645 (18.8%) were in the North East Region (Table 4, page 5).

In the December quarter 2004 there was a total of 2,051 processed persons in the Metropolitan Region who were charged according to Police District (PD):

- South East Metro PD - 452 (22.0%);
- South Metro PD - 336 (16.4%);
- West Metro PD - 373 (18.2%);
- North West Metro PD - 263 (12.8%);
- Central Metro PD - 365 (17.8%); and
- East Metro PD - 262 (12.8%).

In the December quarter 2004 there was a total of 735 processed persons in the Southern Region who were charged according to PD:

- South West PD - 204 (27.8%);
- Great Southern PD - 241 (32.8%);
- Wheatbelt PD - 161 (21.9%); and
- Peel PD - 130 (17.7%).

In the December quarter 2004 there was a total of 645 processed persons in the North East Region who were charged according to PD:

- Goldfields-Esperance PD - 263 (40.8%);
- Midwest-Gascoyne region PD - 155 (24.0%);
- Pilbara PD - 131 (20.3%); and
- Kimberley PD - 96 (15.9%).

Age groups

The breakdown of quarterly offences by age group from 1998, which is counted on *processed persons*, shows that about three quarters of all drug offences involved persons aged between 15 and 34 years (Table 5, page 6).

In the December quarter 2004 (the most recent quarter), there was a total of 3,431 processed persons, of whom:

- 71 (2.1%) were aged less than 15 years;
- 785 (22.9%) were aged 15 to 19 years;
- 812 (23.7%) were aged 20 to 24 years;
- 1,013 (29.5%) were aged 25 to 34 years;
- 547 (15.9%) were aged 35 to 44 years; and
- 203 (5.9%) were aged 45 years and older.

METROPOLITAN REGION

Type of offence

In the December quarter 2004 there was a total of 2,069 offences, of which 1,742 (84.2%) were possession offences and 327 (15.8%) were trafficking offences (Table 6, page 7).

Age groups

A breakdown of data for the Metropolitan Region by age group, which is counted on *processed persons*, shows that about three quarters of all drug offences involved persons aged between 15 and 34 years (Table 7, page 8). In the December quarter 2004 there was a total of 2,051 processed persons, of whom:

- 45 (2.2%) were aged less than 15 years;
- 511 (24.9%) were aged 15 to 19 years;
- 508 (24.8%) were aged 20 to 24 years;
- 584 (28.5%) were aged 25 to 34 years;
- 312 (15.2%) were aged 35 to 44 years; and
- 91 (4.4%) were aged 45 years and older.

SOUTHERN REGION

Type of offence

In the December quarter 2004 there was a total of 707 offences, of which 568 (80.3%) were possession offences and 139 (19.7%) were trafficking offences (Table 8, page 9).

Age groups

A breakdown of data for the Southern Region by age group, which is counted on *processed persons*, shows that just over seven out of 10 of all drug offences involved persons aged between 15 and 34 years (Table 9, page 10). In the December quarter 2004 there was a total of 735 processed persons, of whom:

- 9 (1.2%) were aged less than 15 years;
- 194 (26.4%) were aged 15 to 19 years;
- 133 (18.1%) were aged 20 to 24 years;
- 193 (26.3%) were aged 25 to 34 years;
- 140 (19.1%) were aged 35 to 44 years; and
- 66 (9.0%) were aged 45 years and older.

NORTH EAST REGION

Type of offence

In the December quarter 2004 there was a total of 513 offences, of which 439 (85.6%) were possession offences and 74 (14.4%) were trafficking offences (Table 10, page 11).

Age groups

A breakdown of data for the North East Region by age group, which is counted on *processed persons*, shows that about three quarters of all drug offences involved persons aged between 15 and 34 years (Table 11, page 12). In the December quarter 2004 there was a total of 645 processed persons, of whom:

- 17 (2.6%) were aged less than 15 years;
- 80 (12.4%) were aged 15 to 19 years;
- 171 (26.5%) were aged 20 to 24 years;
- 236 (36.6%) were aged 25 to 34 years;
- 95 (14.7%) were aged 35 to 44 years; and
- 46 (7.1%) were aged 45 years and older.

DRUG SEIZURES

Total annual drug seizures increased by 15.5%, from 19,962 in 1998 to 23,054 in 2000 and then fell by 41.2% to 13,558 in 2004 (Tables 12 and 13, page 13). With respect to the major drug groups:

- amphetamine seizures increased by 122.6% from 1998 (1,019) to 2004 (2,268);
- methylamphetamine seizures increased by more than eight fold from 1998 (41) to 2003 (341), then fell with a total of 19 seizures in 2004;
- ecstasy seizures doubled from 1998 (190 seizures) to 2004 (384 seizures);
- cannabis seizures decreased by 42.6% from 1998 (16,798 seizures) to 2004 (9,644 seizures);
- heroin seizures decreased by 82.0% from 1998 (852) to 2004 (153); and
- cocaine seizures fell by 60.8% from 1998 (79) to 2004 (31).

Information about quarterly seizures from the March quarter 1998 for the major drug groups is presented in Tables 14 - 17 (pages 14 and 15).

Quarterly trends in seizures involving cannabis, heroin, morphine, amphetamine, methylamphetamine and ecstasy are presented in Figures 2 - 7 (pages 16 and 17).

State - Quarterly Offences

Table 2
Quarterly drug offences by police region and police district, 2000-2001

Region & police district	2000		2001			
	Qtr 3	Qtr 4	Qtr 1	Qtr 2	Qtr 3	Qtr 4
Metropolitan region						
South East Metro	400	296	424	432	433	429
South Metro	652	586	663	690	726	556
North West Metro	397	243	352	355	308	285
East Metro	278	265	313	251	258	225
West Metro	417	372	451	462	372	397
Central Metro	470	406	363	449	497	357
Total	2,614	2,168	2,566	2,639	2,594	2,249
Southern region						
Great Southern	134	153	236	238	152	158
Peel	106	65	124	173	126	130
South West	215	245	277	353	255	197
Wheatbelt	153	123	110	134	119	119
Total	608	586	747	898	652	604
North east region						
Goldfields-Esperance	279	302	230	245	204	263
Kimberley	124	43	74	59	64	57
Midwest-Gascoyne	108	181	159	188	160	133
Pilbara	100	58	850	116	130	107
Total	611	584	543	608	558	560

Note: Count is based on processed persons not offences.

Table 3
Quarterly drug offences by police region and police district, 2002-2003

Region & police district	2002				2003			
	Qtr 1	Qtr 2	Qtr 3	Qtr 4	Qtr 1	Qtr 2	Qtr 3	Qtr 4
Metropolitan region								
South East Metro	417	415	412	337	339	368	367	261
South Metro	638	619	502	565	424	543	364	290
North West Metro	267	373	296	256	245	306	309	239
East Metro	248	341	283	278	285	283	292	270
West Metro	411	412	373	388	407	391	333	304
Central Metro	403	423	452	388	321	388	308	235
Total	2,384	2,583	2,318	2,212	2,021	2,279	1,973	1,599
Southern region								
Great Southern	234	234	193	167	163	221	165	218
Peel	177	125	152	97	151	113	87	114
South West	287	335	259	317	334	341	270	248
Wheatbelt	92	144	149	115	125	73	106	99
Total	790	838	753	696	773	748	628	679
North east region								
Goldfields-Esperance	281	244	256	271	325	257	223	278
Kimberley	61	67	62	82	60	73	108	71
Midwest-Gascoyne	156	173	87	120	186	168	131	111
Pilbara	98	87	98	109	61	81	99	70
Total	596	571	503	582	632	579	561	530

Note: Count is based on processed persons not offences.

State - Quarterly Offences

Table 4
Quarterly drug offences by police region and police district, 2004

Region & police district	2004			
	Qtr 1	Qtr 2	Qtr 3	Qtr 4
Metropolitan region				
South East Metro	281	566	430	452
South Metro	356	415	363	336
North West Metro	275	397	408	263
East Metro	211	364	305	262
West Metro	379	637	460	373
Central Metro	287	411	345	365
Total	1,789	2,790	2,311	2,051
Southern region				
Great Southern	265	149	179	241
Peel	121	159	102	130
South West	264	395	413	204
Wheatbelt	111	133	65	160
Total	761	836	759	735
North east region				
Goldfields-Esperance	196	172	156	263
Kimberley	42	76	167	96
Midwest-Gascoyne	137	176	130	155
Pilbara	73	59	110	131
Total	448	483	563	645

Note: Count is based on processed persons not offences.

State - Quarterly Offences

Table 5
Quarterly drug offences by age group, processed persons, 1998-2001

Year & qtr	<15	15-19	20-24	25-34	35-44	45+	Total
1998							
Qtr 1	147	810	716	835	420	115	3,043
Qtr 2	232	1,126	817	1,116	513	127	3,931
Qtr 3	217	1,062	702	870	340	98	3,289
Qtr 4	149	930	712	807	360	101	3,059
Total	745	3,928	2,947	3,628	1,633	441	13,322
1999							
Qtr 1	150	906	705	998	446	151	3,356
Qtr 2	213	1,016	751	996	388	136	3,500
Qtr 3	186	1,035	688	923	415	120	3,367
Qtr 4	126	872	720	828	346	161	3,008
Total	675	3,829	2,864	3,745	1,595	568	13,231
2000							
Qtr 1	93	905	715	859	399	118	3,089
Qtr 2	174	1,179	774	1,015	413	122	3,677
Qtr 3	143	1,135	893	1,093	461	108	3,833
Qtr 4	173	940	726	943	444	112	3,338
Total	583	4,159	3,108	3,910	1,717	460	13,937
2001							
Qtr 1	157	826	803	1,164	532	153	3,635
Qtr 2	216	950	832	1,184	531	164	3,877
Qtr 3	133	911	852	1,018	498	160	3,572
Qtr 4	159	857	709	921	407	149	3,202
Total	665	3,544	3,196	4,287	1,968	626	14,286
2002							
Qtr 1	100	902	915	1,110	527	178	3,732
Qtr 2	198	991	772	1,118	586	176	3,841
Qtr 3	139	976	732	948	464	148	3,407
Qtr 4	114	826	695	993	536	195	3,359
Total	551	3,695	3,114	4,169	2,113	697	14,339
2003							
Qtr 1	96	690	647	975	602	215	3,225
Qtr 2	166	830	837	975	530	171	3,509
Qtr 3	105	790	707	931	491	189	3,213
Qtr 4	83	724	613	737	496	167	2,820
Total	450	3,034	2,804	3,618	2,119	742	12,767
2004							
Qtr 1	49	723	641	873	527	185	2,998
Qtr 2	113	976	877	1,173	696	276	4,109
Qtr 3	88	719	852	1,193	618	163	3,633
Qtr 4	71	785	812	1,013	547	203	3,431
Total	321	3,203	3,182	4,252	2,388	827	14,171

Note: Excludes cases where age is unknown.

Metropolitan Region - Quarterly Offences

Table 6
Quarterly drug offences by type of offence, 2000-2004

Year & qtr	Possession	Trafficking	Total
2000			
Qtr 1	-	-	-
Qtr 2	-	-	-
Qtr 3	2,287	278	2,565
Qtr 4	1,922	246	2,168
Total	4,209	524	4,733
2001			
Qtr 1	2,165	401	2,566
Qtr 2	2,289	350	2,639
Qtr 3	2,278	316	2,594
Qtr 4	2,029	220	2,249
Total	8,761	1,287	10,048
2002			
Qtr 1	2,083	301	2,384
Qtr 2	2,299	284	2,583
Qtr 3	2,087	231	2,318
Qtr 4	1,940	272	2,212
Total	8,409	1,088	9,497
2003			
Qtr 1	1,743	278	2,021
Qtr 2	2,012	267	2,279
Qtr 3	1,727	246	1,973
Qtr 4	1,352	247	1,599
Total	6,834	1,038	7,872
2004			
Qtr 1	1,434	312	1,746
Qtr 2	2,096	384	2,480
Qtr 3	1,905	322	2,227
Qtr 4	1,742	327	2,069
Total	7,177	1,345	8,522

Note: Count is based on offences not processed persons.

Metropolitan Region - Quarterly Offences

Table 7
Quarterly drug offences by age group, processed persons, 2000-2004

Year & qtr	<15	15-19	20-24	25-34	35-44	45+	Total
2000							
Qtr 1	-	-	-	-	-	-	-
Qtr 2	-	-	-	-	-	-	-
Qtr 3	95	862	636	678	294	-	2,565
Qtr 4	122	644	492	559	288	63	2,168
Total	217	1,506	1,128	1,237	582	63	4,733
2001							
Qtr 1	111	572	514	755	337	95	2,384
Qtr 2	131	656	555	743	332	94	2,511
Qtr 3	93	642	600	684	309	97	2,425
Qtr 4	86	630	467	605	230	72	2,090
Total	421	2,500	2,136	2,787	1,208	358	9,410
2002							
Qtr 1	63	608	618	654	287	111	2,341
Qtr 2	106	665	471	703	358	102	2,405
Qtr 3	74	667	473	636	264	82	2,196
Qtr 4	72	590	446	585	310	108	2,111
Total	315	2,530	2,008	2,578	1,219	403	9,053
2003							
Qtr 1	51	449	377	532	294	89	1,792
Qtr 2	92	547	495	644	321	90	2,189
Qtr 3	58	527	471	559	310	95	2,020
Qtr 4	39	448	373	421	252	89	1,622
Total	240	1,971	1,716	2,156	1,177	363	7,623
2004							
Qtr 1	28	460	406	540	269	86	1,789
Qtr 2	61	699	596	782	457	195	2,790
Qtr 3	46	503	598	710	343	111	2,311
Qtr 4	45	511	508	584	312	91	2,051
Total	180	2,173	2,108	2,616	1,381	483	8,941

Note: Excludes cases where age is unknown.

Southern Region - Quarterly Offences

Table 8
Quarterly drug offences by type of offence, 2000-2004

Year & quarter	Possession	Trafficking	Total
2000			
Qtr 1	-	-	-
Qtr 2	-	-	-
Qtr 3	536	72	608
Qtr 4	411	37	448
Total	947	109	1,056
2001			
Qtr 1	584	163	747
Qtr 2	773	125	898
Qtr 3	573	79	652
Qtr 4	503	101	604
Total	2,433	468	2,901
2002			
Qtr 1	629	161	790
Qtr 2	710	128	838
Qtr 3	658	95	753
Qtr 4	562	134	696
Total	2,559	518	3,077
2003			
Qtr 1	607	166	773
Qtr 2	647	101	748
Qtr 3	560	68	628
Qtr 4	561	118	679
Total	2,375	453	2,828
2004			
Qtr 1	579	164	743
Qtr 2	584	181	765
Qtr 3	525	84	609
Qtr 4	568	139	707
Total	2,256	568	2,824

Note: Count is based on offences not processed persons.

Southern Region - Quarterly Offences

Table 9
Quarterly drug offences by age group, processed persons, 2000-2004

Year & quarter	<15	15-19	20-24	25-34	35-44	45+	Total
2000							
Qtr 1	-	-	-	-	-	-	-
Qtr 2	-	-	-	-	-	-	-
Qtr 3	20	181	116	179	76	36	608
Qtr 4	21	83	96	174	74	-	448
Total	41	264	212	353	150	36	1,056
2001							
Qtr 1	32	168	147	229	127	28	731
Qtr 2	64	200	163	265	118	41	851
Qtr 3	25	163	144	162	99	34	627
Qtr 4	54	136	111	126	95	43	565
Total	175	667	565	782	439	146	2,774
2002							
Qtr 1	21	181	137	256	140	37	772
Qtr 2	57	197	172	233	126	51	836
Qtr 3	53	219	128	180	104	39	723
Qtr 4	29	152	128	198	114	42	663
Total	160	749	565	867	484	169	2,994
2003							
Qtr 1	32	168	157	216	141	84	798
Qtr 2	50	195	159	165	116	37	722
Qtr 3	24	162	138	190	84	45	643
Qtr 4	16	179	150	164	120	29	658
Total	122	704	604	735	461	195	2,821
2004							
Qtr 1	13	173	158	191	169	57	761
Qtr 2	34	187	172	254	143	46	836
Qtr 3	20	162	147	253	147	30	759
Qtr 4	9	194	133	193	140	66	735
Total	76	716	610	891	599	199	3,091

Note: Excludes cases where age is unknown.

North East Region - Quarterly Offences

Table 10
Quarterly drug offences by type of offence, 2000-2004

Year & quarter	Possession	Trafficking	Total
2000			
Qtr 1	-	-	-
Qtr 2	-	-	-
Qtr 3	547	64	611
Qtr 4	566	107	673
Total	1,113	171	1,284
2001			
Qtr 1	484	59	543
Qtr 2	545	63	608
Qtr 3	500	58	558
Qtr 4	506	54	560
Total	2,035	234	2,269
2002			
Qtr 1	545	51	596
Qtr 2	529	42	571
Qtr 3	465	38	503
Qtr 4	526	56	582
Total	2,065	187	2,252
2003			
Qtr 1	553	79	632
Qtr 2	494	85	579
Qtr 3	496	65	561
Qtr 4	468	62	530
Total	2,011	291	2,302
2004			
Qtr 1	358	67	425
Qtr 2	375	61	436
Qtr 3	404	108	512
Qtr 4	439	74	513
Total	1,576	310	1,886

Note: Count is based on offences not processed persons.

North East Region - Quarterly Offences

Table 11
Quarterly drug offences by age group, processed persons, 2000-2004

Year & quarter	<15	15-19	20-24	25-34	35-44	45+	Total
2000							
Qtr 1	-	-	-	-	-	-	-
Qtr 2	-	-	-	-	-	-	-
Qtr 3	28	92	141	236	91	23	611
Qtr 4	30	213	138	210	82	-	673
Total	58	305	279	446	173	23	1,284
2001							
Qtr 1	14	86	142	180	68	30	520
Qtr 2	22	108	130	197	92	30	579
Qtr 3	15	106	108	172	90	29	520
Qtr 4	19	91	131	1960	82	34	547
Total	70	391	511	2,509	332	123	2,166
2002							
Qtr 1	16	113	160	200	100	30	619
Qtr 2	35	129	129	182	102	23	600
Qtr 3	12	90	131	132	96	27	488
Qtr 4	13	84	121	210	112	45	585
Total	76	416	541	724	410	125	2,292
2003							
Qtr 1	13	73	113	227	167	42	635
Qtr 2	24	88	183	166	93	44	598
Qtr 3	23	101	98	182	97	49	550
Qtr 4	28	97	90	152	124	49	540
Total	88	359	484	727	481	184	2,323
2004							
Qtr 1	8	90	77	142	89	42	448
Qtr 2	18	88	109	137	96	35	483
Qtr 3	22	54	107	230	128	22	563
Qtr 4	17	80	171	236	95	46	645
Total	65	312	464	745	408	145	2,139

Note: Excludes cases where age is unknown.

State - Annual Seizures

Table 12
Annual seizures by type of drug, WA, 1998-2001

Drug type	1998		1999		2000		2001	
	n	%	n	%	n	%	n	%
Amphetamine	1,019	5.1	1,360	6.4	2,016	8.7	2,675	11.7
Cannabis	16,798	84.1	17,467	82.7	16,746	72.6	17,198	75.4
Cocaine	79	0.4	12	0.1	31	0.1	50	0.2
Dexamphetamine	52	0.3	88	0.4	111	0.5	156	0.7
Heroin	852	4.3	808	3.8	661	2.9	296	1.3
LSD	91	0.5	77	0.4	104	0.5	47	0.2
MDA	-	-	-	-	-	-	32	0.1
MDMA (Ecstasy)	190	1.0	214	1.0	337	1.5	407	1.8
Methylamphetamine	41	0.2	88	0.4	156	0.7	349	1.5
Morphine	27	0.1	40	0.2	25	0.1	43	0.2
Opium	11	0.1	43	0.2	14	0.1	18	0.1
Other	251	1.3	255	1.2	379	1.6	433	1.9
Unknown	551	2.8	660	3.1	2,474	10.7	1,091	4.8
Total	19,962	100.0	21,112	100.0	23,054	100.0	22,795	100.0

Table 13
Annual seizures by type of drug, WA, 2002-2004

Drug type	2002		2003		2004	
	n	%	n	%	n	%
Amphetamine	1,639	10.2	1,569	11.4	2,268	16.7
Cannabis	12,781	79.4	10,403	75.4	9,644	71.1
Cocaine	12	0.1	20	0.1	31	0.2
Dexamphetamine	156	1.0	60	0.4	6	<0.1
Heroin	137	0.9	181	1.3	153	1.1
LSD	21	0.1	16	0.1	6	<0.1
MDA	29	0.2	12	0.1	-	
MDMA (Ecstasy)	218	1.4	245	1.8	384	2.8
Methylamphetamine	183	1.1	341	2.5	19	0.1
Morphine	64	0.4	50	0.4	12	0.1
Opium	6	0.1	25	0.2	7	0.1
Other	282	1.8	534	3.9	528	3.9
Unknown	571	3.5	313	2.5	500	3.7
Total	16,099	100.0	13,794	100.0	13,558	100.0

State - Quarterly Seizures

Table 14
Quarterly seizures by type of drug, WA, 1998-1999

	1998				1999			
	Qtr 1	Qtr 2	Qtr 3	Qtr 4	Qtr 1	Qtr 2	Qtr 3	Qtr 4
Amphetamine	161	281	255	322	365	388	367	240
Cannabis	4,330	5,029	3,792	3,647	4,893	4,454	3,958	4,162
Cocaine	11	24	24	20	1	2	3	6
Dexamphetamine	5	13	21	13	19	22	23	24
Ecstasy (MDMA)	21	68	27	74	73	64	38	39
Heroin	218	238	233	163	216	216	204	172
LSD	22	25	20	24	20	17	11	29
MDA	-	-	-	-	-	-	-	-
Methylamphetamine	10	10	5	16	11	32	18	27
Morphine	7	8	7	5	2	11	16	11
Opium	6	-	-	5	2	-	-	41
Other	65	100	46	40	66	80	49	60
Unknown Powder	112	193	126	120	103	187	211	159
Total	4,968	5,989	4,556	4,449	5,771	5,473	4,898	4,970

Table 15
Quarterly seizures by type of drug, WA, 2000-2001

	2000				2001			
	Qtr 1	Qtr 2	Qtr 3	Qtr 4	Qtr 1	Qtr 2	Qtr 3	Qtr 4
Amphetamine	435	436	667	478	681	756	690	548
Cannabis	4,287	4,473	4,361	3,625	4,666	4,858	3,973	3,701
Cocaine	3	2	5	21	19	4	9	18
Dexamphetamine	26	22	37	26	37	42	42	35
Ecstasy (MDMA)	88	51	73	125	157	94	100	56
Heroin	172	184	160	145	102	92	56	46
LSD	37	35	16	16	27	16	2	6
MDA	-	-	-	-	8	9	8	7
Methylamphetamine	35	24	38	59	46	81	170	52
Morphine	10	4	4	7	8	9	16	10
Opium	9	1	-	4	3	-	9	6
Other	137	58	74	110	106	156	87	84
Unknown Powder	1,525	310	381	258	321	259	196	315
Total	6,764	5,600	5,816	4,874	6,181	6,842	5,358	4,884

State - Quarterly Seizures

Table 16
Quarterly seizures by type of drug, WA, 2002-2003

	2002				2003			
	Qtr 1	Qtr 2	Qtr 3	Qtr 4	Qtr 1	Qtr 2	Qtr 3	Qtr 4
Amphetamine	475	450	372	342	386	446	415	322
Cannabis	3,297	3,669	2,975	2,840	2,860	2,953	2,369	2,221
Cocaine	5	2	3	2	2	8	3	7
Dexamphetamine	37	28	44	47	28	20	5	7
Ecstasy (MDMA)	59	41	45	73	45	77	64	59
Heroin	36	46	36	19	43	47	45	46
LSD	5	4	6	6	5	5	2	4
MDA	4	10	4	11	6	3	3	-
Methylamphetamine	48	49	40	46	107	103	87	44
Morphine	15	22	18	9	29	7	10	4
Opium	1	1	-	4	3	2	3	17
Other	68	81	72	59	110	121	159	144
Unknown Powder	139	166	139	127	122	127	64	25
Total	4,189	4,570	3,755	3,585	3,746	3,919	3,229	2,900

Table 17
Quarterly seizures by type of drug, WA, 2004-2005

	2004				2005			
	Qtr 1	Qtr 2	Qtr 3	Qtr 4	Qtr 1	Qtr 2	Qtr 3	Qtr 4
Amphetamine	453	636	594	585				
Cannabis	2,299	2,733	2,349	2,263				
Cocaine	1	1	24	5				
Dexamphetamine	4	2	-	-				
Ecstasy (MDMA)	79	79	109	117				
Heroin	31	56	40	26				
LSD	-	17	6	3				
MDA	-	-	-	-				
Methylamphetamine	10	9	-	-				
Morphine	11	1	-	-				
Opium	1	3	3	-				
Other	131	308	247	258				
Unknown Powder	31	4	-	-				
Total	3,079	3,850	3,372	3,257				

State - Quarterly Seizures

Figure 2
Quarterly cannabis seizures, 1998-2004

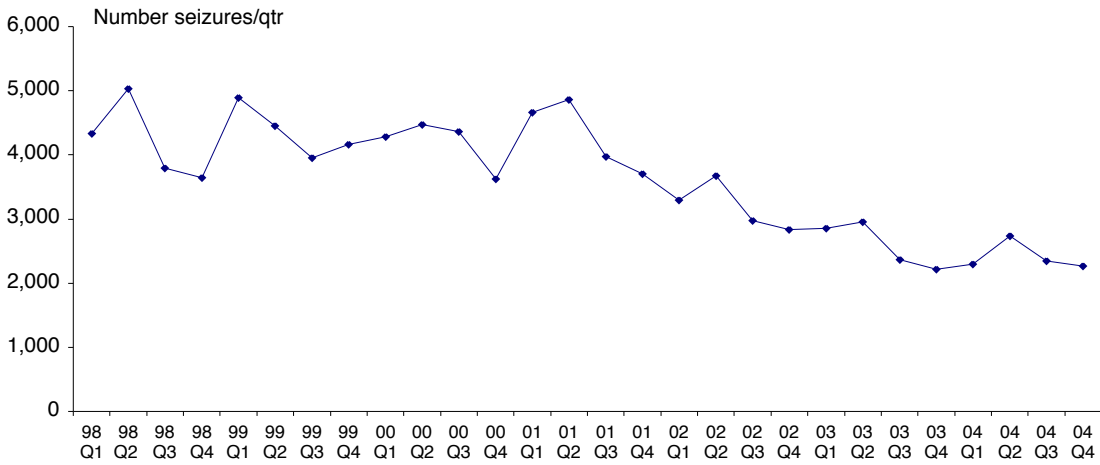


Figure 3
Quarterly heroin seizures, 1998-2004

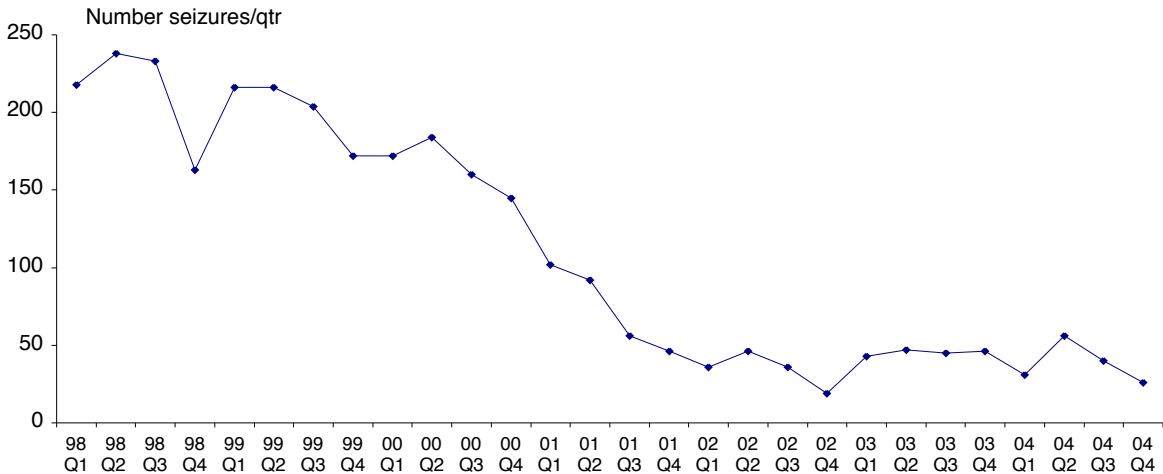
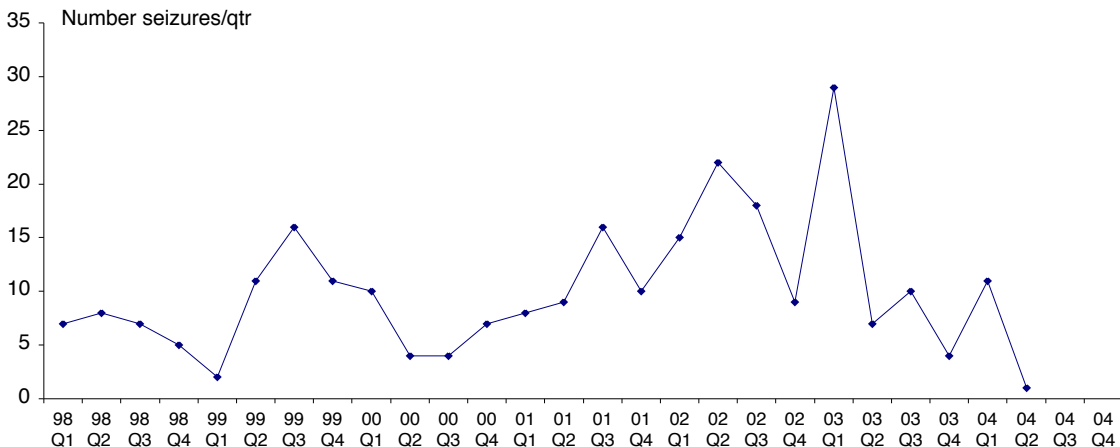


Figure 4
Quarterly morphine seizures, 1998-2004



State - Quarterly Seizures

Figure 5
Quarterly amphetamine seizures, 1998-2004

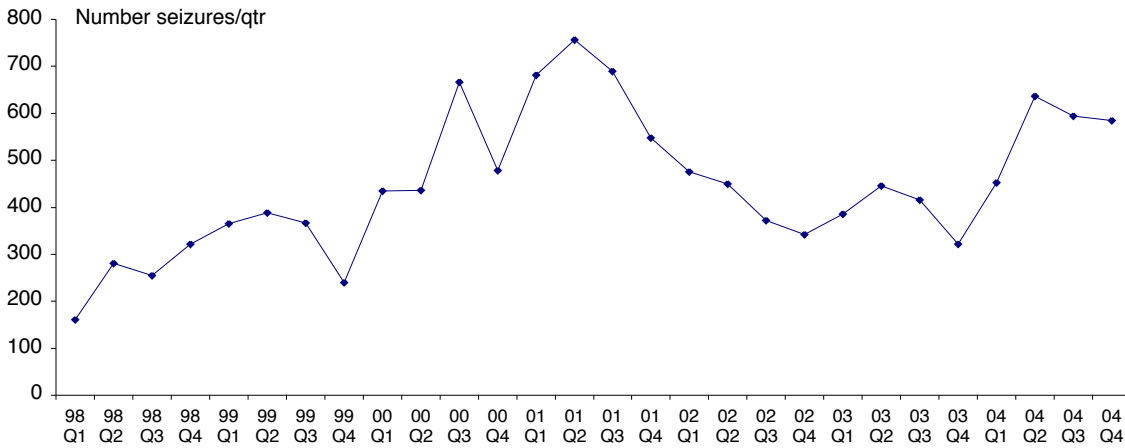


Figure 6
Quarterly methamphetamine seizures, 1998-2004

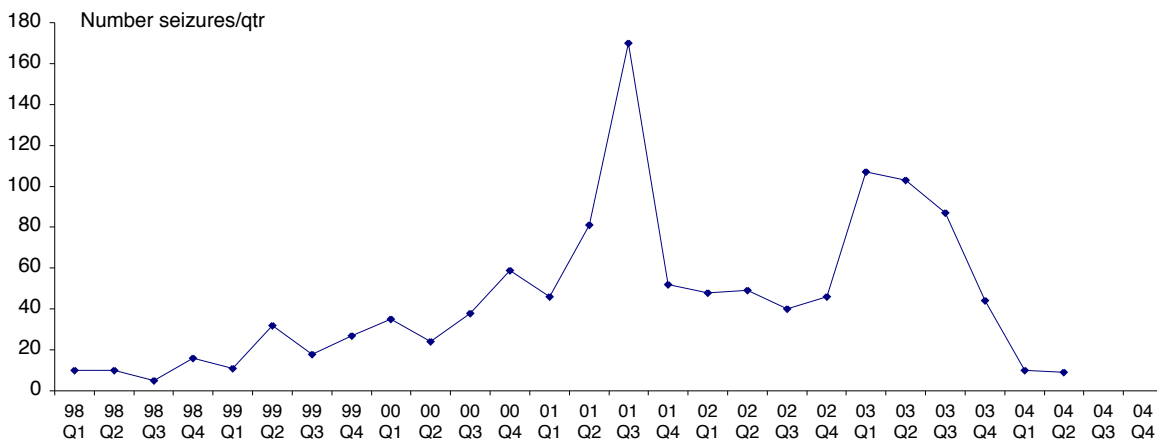
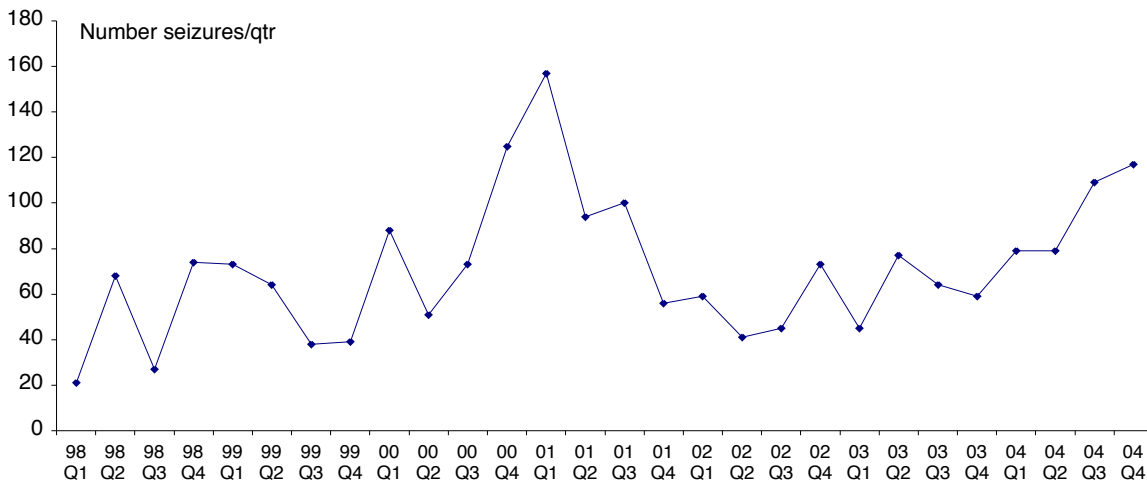


Figure 7
Quarterly ecstasy seizures, 1998-2004



METHODS

Information in this publication has been provided by the Crime Information Unit of the West Australian Police Service. It contains data extracted from the Offence Information System (OIS), which is a count of the number of offences under the *Misuse of Drugs Act 1981* where a person has been processed. As data contained in this publication counts multiple offences, it does not provide a count of distinct persons.

'Processed persons' refers to adults as well as juveniles who have been arrested, summonsed, cautioned or appeared before a Juvenile Justice Team. This data does not measure court outcomes.

The cross tabulations of age group are based on the count of processed persons, whereas the breakdown of offences into 'possession' and 'trafficking' is based on a count of offences. As an offender may be charged with more than one offence there will be different counts of the total of drug offences for any quarterly period.

This data reflects police activity and accordingly deals with reported crime which has been detected and resulted in the apprehension of an offender.

There are some difficulties in relation to interpretation of data from the seizure database, which is separate from the OIS. The data files for seizures are unstructured, lack uniform definitions and are unreliable as in some instances the type of drug seized cannot be readily identified.

As there may be multiple seizures of drugs for each offence report, duplicate seizures have been removed so that the count of seizures is based on the most serious processed offence on a scale from:

- 1) sell/supply (the most serious offence);
- 2) cultivation;
- 3) manufacture; and
- 4) possession/use (the least serious offence).

Offences are aggregated into two groups, 'possession' and 'trafficking'. Possession refers to two types of offences, possession/use and possession of implements, both of which are simple offences which are dealt with summarily in a Court of Petty Sessions.

The term 'trafficking' refers to more serious offences, the offences of sell/supply, cultivation and manufacture which are usually dealt with in the higher courts.

It should be noted that the OIS does not accurately count the number of plants for offences of cultivation. This means it is not possible to determine the level of seriousness for this offence and accordingly all cultivation offences are included as a 'trafficking' offence, even though cultivation of less than 10 plants is a simple offence.

Following amendments in October 2003 to the *Misuse of Drugs Act 1981* the possession of 10 or more cannabis plants is the serious offence of cultivation with intent to sell or supply, whereas the cultivation of less than 10 plants is a minor offence.

The aggregated data reported in this publication is based on the following distinct offences under the *Misuse of Drugs Act 1981*:

- possession/use of prohibited drugs or prohibited plants;
- possession of smoking implements;
- sell/supply of prohibited drugs or prohibited plants;
- cultivation of prohibited plants;
- manufacture of prohibited drugs; and
- other drug offences.

Up to September 2000 police services in Western Australia were organised into 15 Districts, grouped into the Metropolitan Region and three country regions (Central Region, Southern Region and Northern Region).

Regional boundaries were revised in 1 July 2000, which took effect from 1 October 2000. Police services are now organised into 14 Districts and grouped into three regions, the metropolitan region and two country regions, as follows.

Metropolitan Region

- South East Metro District (formerly Cannington District);
- South Metro District (formerly Fremantle District);
- East Metro District (formerly Midland District);
- West Metro District (formerly Mirrabooka District);
- North West Metro District (formerly Joondalup District); and
- Central Metro District (formerly Perth District).

Southern Region

- Great Southern District;
- Peel District;
- South West District; and
- Wheatbelt District.

North East Region

- Goldfields-Esperance District;
- Kimberley District;
- Midwest-Gascoyne District; and
- Pilbara District.

This publication is available online at
<http://www.dao.health.wa.gov.au>